

Issue No. 888

May 2026

The News Sheet

North London Society of Model Engineers

**May
2026**



You can see this News Sheet in
colour by visiting our web site at www.nlsme.co.uk

Contents

Chairman's Comments	Page 3
Treasurers Report	Page 4
Editor's Comments & Coal/Oil Update	Page 5
General Meeting Report April 2026	Page 6
Gauge 1 Section Update	Page 8
Marine Mumbles	Page 11
Fetes & Fairs Diary	Page 13
Class 99 Locomotive Spotted	Page 14
Bookworm Writes	Page 15
Updated Track Stewards Rota	Page 19
Club Dates for your Diary	Page 23
Contacts list	Rear Page

Front cover;

A 5 inch Steam loco 'City of Carlisle' 6238 out in the sunshine from the last running day at our track back in 2018. I thought it was a nice image to remind us of all the days in the Sunshine (hopefully) we have to look forward to this season,

Picture by Owen

Your editor is very grateful to all those who have contributed to this edition. Your efforts are much appreciated by all the members of NLSME. This News Sheet would not be possible without you.

Articles long or short on any subject which would be of interest to members of NLSME will be gratefully received for inclusion in future editions. If you don't want to put pen to paper but have a suggestion for a topic which is of interest let the editor know and we will do the rest.

Chairman's Comments



First, I remind you that this year our AGM will be held Friday, 8th May at 8pm at HQ. I hope many will attend.

A feature of our modern world is the development of new legislation impacting clubs and societies of all kinds. NLSME council must review those that affect us and implement policies and procedures applicable to our activities.

I have written before about Martyn's Law. That comes into effect April next year and applies to all premises that have more than 200 persons present. We get close to or exceed this on public days so, during the 2026 running season, we will be counting visitors and members at Tyttenhanger to ascertain actual numbers we typically have on site.

We also need to implement a Safeguarding Policy. The purpose of such is to protect children and vulnerable adults. Whilst we have a Child Protection Policy, we do not have anything for vulnerable adults. If any of you have expertise in this area and is prepared to assist council in drawing up our policy, please let me know. We will very much appreciate your input.

The ground level section asks me to express their thanks to Alan M for the time and commitment he has given to the ground level railway signalling system. Alan has now handed over responsibility for this to the GL crew. I would add also that George C and Paul G have spent considerable time and expertise maintaining and upgrading the raised track signalling system. These are important matters far beyond my technical understanding. I add my thanks to all who have worked throughout the winter at Tyttenhanger to get all tracks, pond and infrastructure ready for another season of our enjoyment.

Finally, a reminder that we have first club event on Sunday 3rd May, a member's family and friends day. Tea and snacks provided 2pm – 5pm, help in the coach will be appreciated.

See you at track or HQ.

Treasurer's Report

Firstly an apology for submitting in the April issue my Treasurer's report for April 2025 and not April 2026 in error. How many of you noticed I wonder? Hopefully the correct version will be uploaded onto the Society Website.

I must welcome one new member accepted at the March Council meeting, Nicholas G, who is interested in Gauge One.



Thanks to all those members who have paid their subscriptions so promptly. What with dealing with the end of year accounts and the audit, it has been a very busy month, so you may only just be receiving back any membership cards sent to me. Any member who has yet to pay or amend their Standing Orders to the correct rates, please do so as quickly as possible. About six of you are paying the incorrect rate.

Don't forget that Friday 8th May is our Society AGM at Headquarters in Finchley and on Sunday 3rd May we are holding our Member's Family Day at Colney Heath, see elsewhere in the News Sheet for details, And then on Sunday afternoon 18th May we open our Colney Heath gate to the public for the first time this year.

Keep safe and keep engineering. **Mike**

Something completely different

Being a model engineer with a small workshop one becomes adept at resolving problems totally unrelated to the hobby using the equipment we have without going to considerable expense.

Point of case our bathroom hand basin plug finally gave up keeping water in the sink and rather than going to all the trouble of sourcing a replacement waste trap and plug and fitting it, I took it down to the workshop to investigate.

Found an 'O' ring big enough to replace the existing split rubber ring. Problem it wasn't making a seal unless you had a sink full of water. Brain wave, by mounting the plunger in the lathe by it's



base and running the lathe in reverse, whilst at the same time applying an emery wheel running my Dremel drill at speed I was able to gently grind away the 'O' ring into a flat surface at the same angle that the old washer presented to the basin outlet. Success and zero cost apart from time.

Editor's Comments

Hello all and thanks to everyone for their submissions. Please do keep them coming. The Weather has been great the past few weeks and I hope it continues, the Events Page certainly filled up quickly and sadly I had to leave off a few repeat events in October 2026 due to spacing constraints. I will feature these like normal in one place in the next edition, but for reference it is the following that are missing from the 'Club Dates' page:



Friday 2nd October. General meeting HQ 8pm

Sunday 18th October Family and friends members day at Tyttenhanger

Please refresh your understanding of the Track Stewards duties and any other important guidance provided to ensure a safe and enjoyable season for everyone involved. Once again a massive congratulations to everyone for their efforts in the winter projects, big and small, the site continues to improve and I know it is appreciated by everyone.

I have also given myself a reminder to send out the Newsletter reminder....
Thanks all for your initiative.

Best,
Jack

Supply of bags of coal and steam oils available for sale at the Colney Heath site

*Anthracite Beans in 20 kg bags at £16.00 per bag.
The size most used on our locos.
Anthracite Grains in 20 kg bags at £16.00 per bag.*

Suitable for 3 1/2" gauge or those with very small fire-hole doors.

*Steam Oil 1000 Grade + 360 Grade
Bearing Lubricating Oil 220 grade.*

2 Pints bottles @ £10.00 or 1 Pint bottles @ £5.00

General Meeting Report April 2026

On Friday 10th April Mike gave us a Tour De Force presentation of the Model Engineering hobby drawing on his lifetime's enjoyment of it.

Growing up in the shadow of Alexandra Palace, Mike recalled trains running on the now defunct Great Northern Alexandra Palace line from Finsbury Park via Crouch End. On leaving school Mike was apprenticed to Marconi Instruments starting with an excellent Student Apprenticeship and was employed there for ten 10 years before exploring other opportunities. Not finding shop floor work fully satisfying, a manager at Marconi suggested Technical Teaching at St Albans college might suit his aspirations. Mike duly applied only to find the Chair of the interview panel was that same manager. His position was secured. Twenty-four years later in another career move Mike accepted the role of Technical Editor of the Model Engineer magazine, subsequently becoming its Editor. A position held until retirement.

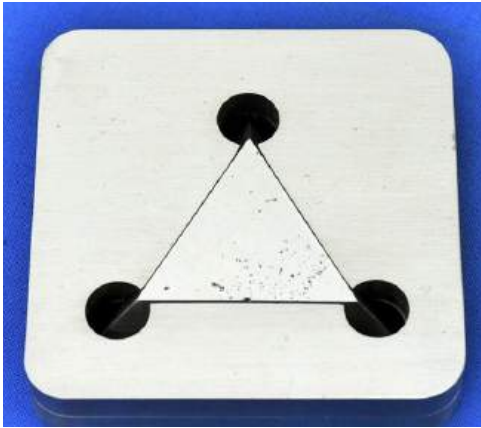
Mike joined the NLSME in 1966 and has deep knowledge of our club's history. He presented slides of society activities including an early rebuild of the steaming bays and the transport/dragging up the site of the site of the coach/brake van. Mike was an instrumental part of the team acquiring this asset for the club.

Mike then expanded his talk into the subject of Model Engineering in its widest sense, illustrated with dozens of high quality photographs of models, often medal winners. Each slide was accompanied by a knowledgeable explanation of the model and its maker. The talk covered the role of competition judges and what they look for in adherence to prototypes.

One item that surprised me is that judges do not expect the materials used to be same as prototype, but they must be finished to look like they are. The models shown encompassed locomotives, stationary engines,

workshops, vintage cars, machine tools, road vehicles and the peerless models of Cherry Hill. Enlivened by Mike's personal knowledge of many of the modelers it was fascinating, informative, enjoyable and much appreciated by the good numbers of members present to hear it.

Mike modestly did not include any of his own workmanship, however he did bring along and passed around his apprentice piece. I have always been fascinated by these.



Apprentices were required to produce them to demonstrate their craft skills. During his time at Marconi, Mike spent some time at the Napier training centre in Luton for the workshop component where he made the piece presented and shown in the photographs.

Hand sawn, drilled, filed and scraped from $\frac{1}{4}$ inch steel plates, the triangular piece will fit perfectly between the two plates in any of the six possible positions. Astonishing.

Note the bevelled edges on insert and matching edges on the plates. An item to be held to be fully appreciated.



Gauge 1 Update

Geoff, Gauge 1 Section leader.

The Gauge 1 section helped in setting up and manning the G1MRA display stand at the London Festival of Model Railways held at Alexandra Palace as well as supplying a number of the models. The show is organised by Warners along with the Model Railway Club who manage and arrange the display layouts and club stands. G1MRA has been affiliated to the MRC for many years and been included in the MRC Easter exhibitions one way or another. I have fond memories of the Gauge 1 layouts that were displayed in the 70's through to the 90's and was glad to be involved with the team in those days. Since then we have only been able to display a portable track intermittently as space is always at a premium. Having a layout at Ally Pally has its problems with regard to our helpers and the effort to bring members locomotives and rolling stock for a day visit to the show.

A display normally requires a team of approximately 20 runners per day. Not everyone is able to dedicate a full weekend to the show which means bringing heavy locomotive and kit in the at the start of each day from the car park located some distance away at the bottom of the hill and return them at the end of the day. As our members get older this has been very off putting. Access on Friday set up day is a lot easier. Since Covid we have provided a static display which is less demanding.



To make our stand more interesting to the visitor we try to include some movement by having a small shunting layout. Obviously whilst flying the G1 flag the aim is to encourage new members.

We try to give a varied display including different types of model propulsion, technical skill in building, varied interest and both impressive models as well as simple. It should be remembered that rolling stock is just as interesting as the locomotive, so this is also included. After last years display of Gauge 1 locos that would be featured in Rail 200 we chose our theme this year as pre-grouping with representations that were absorbed into the Big Four.



The following locomotives were featured:

LNWR Claughton

Great Central Director

Caledonian Cardean

LSWR 3-SUB

Great Eastern S60
GNR J22
LBSCR D3
Great Western City of Truro
And for modern image a Class 66 diesel.

Other models were displayed in the hands on area to show their features.



As the days lengthen Spring cleaning comes to mind. This month we have been tidying up the track and surroundings. We have found a suitable replacement track cover and have installed it and hope it gives a long life as it is UV protected. Now we just need to get a few more

lengths to replace other failing areas of track cover.

I attach evidence of our members working in the distance (some, others were talking at the time).



Jack adds:

Due to an email filter error, last months' G1 addition sat in my junk email and I did not think to check it or check in with Geoff.

Apologies again to the Gauge 1 team, I have since changed my email settings so hopefully this will not happen again.

Marine Mumbles Mk III.

Peter

Just a quick reminder that the Vintage Model Yacht Group are holding their, first of two, regattas at Colney Heath on Sunday 10th May.

It's now continuation time of the Royal Navy WW2 Coastal Forces ordnances (Or guns to you and me).

3pr Hotchkiss QF Mk I Gun.



Belonging to the Hotchkiss family of guns, the 3dr variant was introduced in 1886. Many finished their life as saluting guns on ships from cruisers upwards. HMS Belfast had these fitted.

The caliber of this weapon was 1.850" (47mm).

Simplicity was key to this gun.

It was mounted onto a fixed

height pedestal, which could be locked for elevation and transverse.

Commonly, it trained manually with the gunner having the cushioned rest against his shoulder.

Also attached to this framework was steadying 'ladder', for his left hand, and the firing grips. The grips were connected via a short cable to the trigger of what looked like an antiquated pistol.

Siting was by an adjustable rear V-blade and fore pillar.

To load, the twin angled breech

opening handle was pulled down to drop the breechblock. Then pulled up to close, after the round has been inserted.

This weapon had a maximum range of 6500 yards.





Motor launches and minor auxiliary warships mounted these weapons.

The 1/24 scale 3pdr Mk I Hotchkiss was built as the deck gun for an early production Harbour Defence Motor Launch. As usual I built ship and ordnances from John Lambert's plans and Dave Metcalf's produced hull.

I still haven't forgotten to talk about weathering models. Just keep watching this space (well it might still keep people interested).



Fetes & Fairs

Peter has submitted this year's Fetes & Fairs schedule, please get in contact if you are available to help at any of these events or would like more information on what is involved.

Peter's contact details are on the rear page.

May

Sunday 3rd May - Track Friends & Family day

Monday 4th May – BH Park Street Village Fete (Sponsored by Abbey Line)
The Recreation Ground, Park St Lane AL2 2NE. 12 – 4pm. Set up from 10am

Friday 29th May – Herts Steam & Country Show - Set up day

Saturday 30th – Herts Steam & Country Show

Sunday 31st – Herts Steam & Country Show

June

Friday 12th – Whitwell Steam & Agricultural Show - Set up

Saturday 13th – Whitwell Steam & Agricultural Show

Sunday 14th – Whitwell Steam & Agricultural Show

Saturday 20th – Hertingfordbury

Sunday 21st – Fathers Day + Marsworth

Sunday 28th – St Peter's, Berkhamsted

July

Sunday 5th July – Cottonmill Gathering

August

Friday 14th August – Flamstead Scarecrow Festival

Saturday 15th August – Flamstead Scarecrow Festival

Sunday 16th August – Flamstead Scarecrow Festival

Monday 31st August – Burnham Green

Spotted in Bedford

Thanks to 'Project Bedford – Facebook Page' for their permission and use of their Drone image. Please check the page out on Facebook!

By Jack, the editor,

Hello all, about a year ago I moved house to Bedford and in that time a very large new theme park 'Universal Studios UK' has been given the green light to start building, due to finish by 2031 this is located on a 476-acre former brickworks site, the project includes the theme park, hotel, and entertainment complex, with construction underway as of early 2026, aiming to be a major European destination once complete.

I follow a Facebook page called 'Project Bedford' which is run by a local man and keen Drone photography enthusiast who has kindly given me permission to use a photo in our Newsletter. Being such a new loco and a project I have been following since I purchased my house (thankfully not near the site) I thought it would be nice to include a bit of info in our Newsletter.



[Spotted at Universal Bedford]
This is GB Railfreight (GBRf) Class 99 locomotive 99004, one of the brand-new electro-diesel bi-mode locos delivered to the UK in late 2025. Along with sister loco 99003, it came in via Portbury Docks before heading up to UKRL Leicester for preparation.

99004 is part of the new 99001–99004 fleet, designed specifically for freight use and built to help lead what's being called a real "rail freight revolution." The dual-mode capability means improved efficiency and reduced emissions — serious kit for modern rail operations.

Bookworm Writes

I did say our new worthy Sir Ed, the editor was a hands on sort of a guy, so I knew it wouldn't be long before he would want to say something else to me....and so it came to pass....

“Yo! Bookworm, how’s about getting a computer so I don’t have to keep buying paper and stamps everytime I have something to impart to you? I am getting complaints that your monthly sponsorship deals are only just about covering the cost of all the paper we have to use every month for your...ramblings. So how’s about you’se get a grip, stop the faffing and focus on the subject, and whilst writing I need you to start thinking more outside the box...”

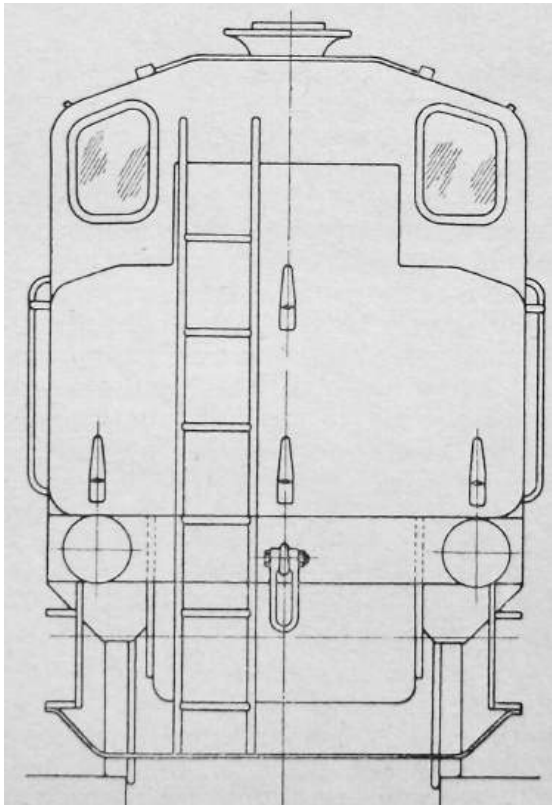
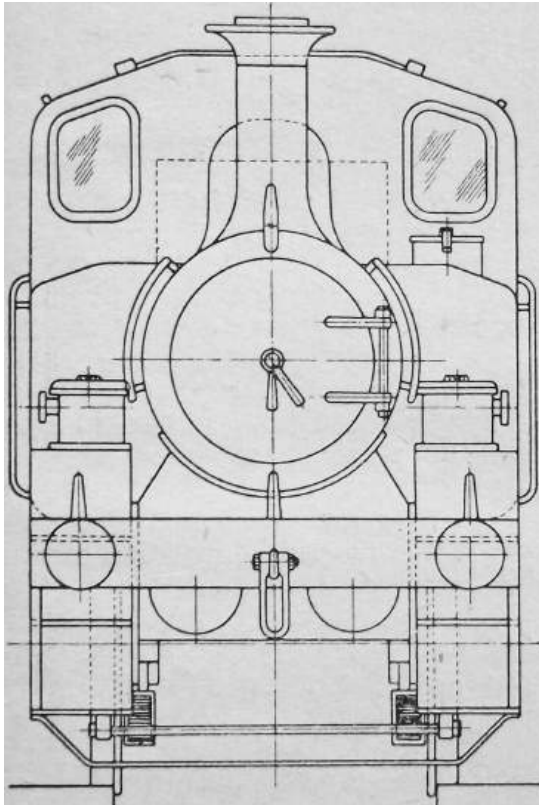
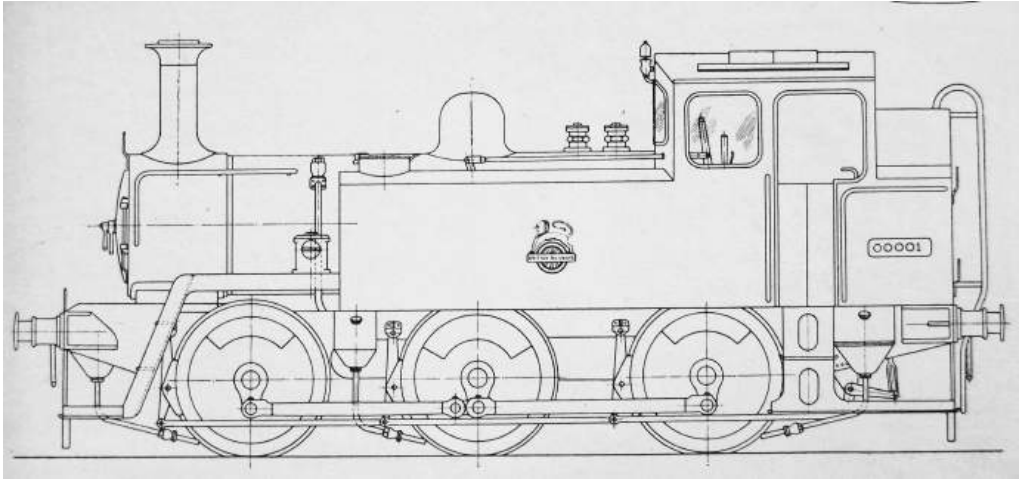
All kindly meant I am sure, but what did he mean outside the box I wondered, I don't live in box..did he mean outside of the shelf...off the shelf maybe?

Anyway since he is known to have the sharpest pair of editor's scissors outside the Fleet Street newspaper museum, I am conscious my dangling modifiers are always but a snip away; so best keep him happy ...

The other afternoon I was just settling for an after dinner snooze, when horror of horrors, a young eager beaver bookworm burst in and started jumping about like a flea on dog. They just wouldn't settle, then it came out, for while they had been rooting inside ME volume 112 for 1955 doing a bit of research for one of my upcoming - quality, every word a gem missives - they had come across what they believed to be an undiscovered outline drawing of a steam locomotive, one they had never seen before but now couldn't wait to tell me about.

I'll spare you from the full-on enthusiasm that sprang the one so young (after all one must be tolerant, we all had to start somewhere), but after hearing their tale and seeing the drawings for myself I did have to admit they might just have something.

For there in the January 27th 1955 issue of Model Engineer on page 90, our old friend LBSC introduced to the world the outline drawing of a locomotive sent to him by a reader, that perhaps at the time it was published, failed to make an impact on his audience who were probably already trying to come to terms with the loss of their beloved old designs of locos giving way to a host of strange new looking steam engines appearing as part of the 'Modernisation Programme' of British Railways. (*get to the point – Ed*)



Let me give you the context then (at last !—Ed) LBSC described it thus:

“A short time ago, a young draughtsman, Mr L.W.Warnett, who served in the drawing office at Brighton (taken to mean loco works - Bwrm), sent me some drawings of a suggested British Railways Class “O,” which he had made, just to see what a L.B. & S.C. Ry, “Terrier” would look like, if built to the standard designs adopted by British Railways.

Friend Warnett’s conception of a “Terrier” with the superstructure made up in accordance with present BR Standards, is both ingenious and interesting; I notice our friend has retained the inside cylinders and presumably the link motion; outside cylinders and Walschaerts gear would have been about the last straw. The arrangement of the running-boards, with dropped front, and “staircase,” doesn’t add to the appearance, in your humble servant’s estimation; but the cab and tanks aren’t so bad, and the bunker capacity is greater than on the original engines. The standard top feeds, safety- valve, regulator with outside rod, mechanical lubricators, and other modern accessories, are all included.”

At this point dear reader I say look for yourselves at the drawings and allow your eyes to run over the outline.....and as I write on I can guess one or two of my loyal fans will already be itching to get out to the workshop and start cutting metal, or are feeling the desire to put pencil to paper, pen to wallpaper, hand to a casting catalogue or digit to the nearest CAD keyboard, for like your humble guide to yesterday’s print, I am sure it will have only taken a moment for them to see potential leaping off the page from this exciting original design. I am confident 5” gauge steam fans will be mulling how they can adapt the chassis from Martin Evans” Boxhill” design, maybe “Jinty” complete with inside cylinders etc, whilst for others they can see this could be yet another incarnation of a “Simplex,” suitably modded of course. For those craving something a little more portable , a positive feast of 0-6-0 inside cylinder designs in 3.5inch gauge are available that could be similarly adapted; this design may yet prove to be the challenge that just keeps on giving (rewards that is, not challenges).

“Think outside the box Bookworm” our worthy Sir Ed, the editor said.... So how is this for radical; with the steam fans sorted...what about the electric fans (that’s the *hip, hip hooray* type, not the whirly ones). An electrically driven engine.. but with a steam outline!! Go on now, hit me with those boxes to tick:
 1) Stonking good looks – TICK 2) Straight forward chassis and wheels to build – TICK 3) Easy superstructure – TICK 4) Steam but adaptable for

electric traction -TICK 5) Will it be powerful? – Is my name Bookworm? – TICK, TICK.

So there it is all wrapped up and in just over a 1000 words this month (to placate my most loyal of loyal fans, the pictures tell the other 1000 - between us we must keep Ed happy). A 71 year old design that in those days would have been described as '*a good workman like job*', but when viewed today by a new generation of model engineers can be seen as an interesting experimental *might have been* that looks both modern and retro; and coming as does from the pencil of a draughtsman who worked for British Railways at that time, gives it an impeccable pedigree....

Build one with confidence then say I and may your steam pressure always be high, or your volts never wither (old Bookworm saying).

Bookworm 2026 – Design and Drawings by L.W.Warnett

Special Footnote: As this engine was designed by a Brighton draughtsman who worked at Brighton loco works where so many BR Standards were built, how about us calling this little one, "Brighton" in honour? At least one engine to this design is believed to have been built in 3.5 or 5 inch gauge and has visited Colney health in the past.

Put new ad here, Ed

ADVERTISEMENT FEATURE:

GO GREEN WITH YOUR NEXT MODEL BY FITTING KLOK- WURK GREEN MOTORS.

YES MAKE YOUR MODEL STAND OUT BY RUNNING ONLY ON KLOK- WURK.

KLOK- WURK ARE PROUD SPONSERS OF THE BOOKWORM SERIES.

TRACK STEWARDS ROTA FOR 2026
+ FINAL FAMILY AND FRIENDS DAY REMINDER

Over the last three month's News Sheets the Track Stewards Rota for 2026 has been published and it will only be a matter of a couple of weeks before we once again welcome the public onto our site at Colney Heath. On the next couple of pages you will find the latest copy of the rota so if you haven't done so already please check when/if you are listed and make a not in your diary calendar.

There have been some minor changes of those members' names on some Sundays since last month's rota publication and we are still one steward short on 5th July. So, if your name is not listed on the following rota or you would be willing to do an additional duty please contact me. My contact details can be found on the back sheet of the News Sheet.

I have written it a number of times already but please make every effort to attend on the date you are allocated, because if you do not it places an extra burden on the other stewards. You are reminded that being a member of the North London Society of Model Engineers does require you to commit to do at least one rota duty when you join or re-join each year (confirmed on your membership form). If, however, you are unable to perform the duty on the date shown on the rota **it is your responsibility** to arrange a swap with another member and to advise the two Senior Stewards of the change. A phone call or email allows the Senior Steward to plan for the number of stewards who will be there. If a swap has been arranged, I would also appreciate being notified by the individual or Senior Steward concerned so that I can update the rota which will be regularly published in the News Sheet.

It is important that Track Stewards should arrive on site at 1.00pm to ensure that all preparations have been completed before the arrival of the public.

Now, if all has gone to plan you will also find included with this month's copy of the News Sheet an A4 sized loose leaf handout to assist those members who will be Track Stewards this year. Please hold onto this and if it will help you please bring it along when it is your day to be a steward.

Now a final reminder. Following on from previous year's successful Society Members, their Family and Friends **only** running days we will be open once again on Sunday 3rd May at our Tyttenhanger Site in Colney Heath. Members may wish to arrive from mid-morning onwards on the day to exercise their locomotives on the Ground Level, Raised or Cuckoo tracks, Gauge 1 and Narrow Gauge tracks plus sail their yachts or other boats on the lake after their winter hibernation. The track will be open for families and friends from 2.00pm onwards.

Tea, coffee and squash will be provided free of charge and it is hoped that members and their family and friends will take the opportunity to bring along a picnic.

We are expecting a good turnout so if you are planning to attend, and with our limited parking facilities, would you please ensure only members cars come on onsite and friends either park in the lane or in Church Lane way before the bridge.

All that remains now is to keep our fingers crossed and hope for fine weather

3 May 2026

Society Family & Friends Day

Please invite your family and friends to come along and enjoy the wonderful site we have at Colney Heath. Tea, Coffee, Orange or Lemon Squash and Biscuits will be provided.

We will need some willing volunteers to make and serve the refreshments so please come along to the carriage to help out.

7 June 2026

Mike F – Senior Steward

1. Roger B
2. Mark C
3. David D
4. Gareth D
5. Michael G
6. Alan M
7. Simon R
8. Derek S
9. Richard S
10. Michael W

Ground Level Despatcher
TBA

5 July 2026

Nigel G – Senior Steward

1. Robert A
2. Peter B
3. Ian B
4. Robert H
5. Geoff H
6. Tracey J
7. Alan M
8. Howard r
9. Dudley W
- 10.

Ground Level Despatcher
TBA

17 May 2026

Peter B – Senior Steward

1. David A
 2. Malcolm B
 3. Geoff B
 4. George C
 5. Nigel D
 6. Paul G
 7. Dave L
 8. Geoff S
 9. Cheryl T
 10. Richard T
- Ground Level Despatcher
TBA

21 June 2026

Chris V – Senior Steward

1. Stephen A
2. Martin B
3. Aaron B
4. Rob B
5. Thomas B
6. Steve C
7. Rai F
8. Steve J
9. Robin M
10. John W

Ground Level Despatcher
TBA

19 July 2026

Owen C - Senior Steward

1. Jonathan A
2. Mike A
3. David B
4. Robert D
5. Paul J
6. Jeremy L
7. Brian L
8. Jake S
9. Stephen S
10. Terry W

Ground Level Despatcher
TBA

2 August 2026

Richard P – Senior Steward

1. James A
2. Brian A
3. Robin B
4. Mark B
5. Ray F
6. Paul G
7. Roy H
8. David M
9. Roy T
10. Alan W
Ground Level Despatcher
TBA

16 August 2026

Michael S – Senior Steward

1. John A
2. Brian C
3. John D
4. Peter F
5. Jack S
6. Dave S
7. Peter S
8. Roy V
9. Romeo V
10. Jack W
Ground Level Despatcher
TBA

6 September 2026

Martin C – Senior Steward

1. Brian B
2. Malcolm B
3. Steven D
4. Grahame G
5. Rob J
6. Steve K
7. Gordon L
8. John M
9. John P
10. Michael T
Ground Level Despatcher
TBA

20 September 2026

Les B – Senior Steward

1. Bill B
2. John B
3. James B
4. Robbie B
5. Peter F
6. Peter F
7. John M
8. Gerald M
9. Edward O'L
10. Daniel P
Ground Level Despatcher
TBA

4 October 2026

Derek E – Senior Steward

1. Derek D
2. Susie F
3. Michael G
4. Mark H
5. Casimir I
6. Craig L
7. Christopher P
8. Tim P
9. Harry P
10. James P
Ground Level Despatcher
TBA

18 October 2026

Keith H – Senior Steward

1. Billy A
 2. David B
 3. Joe F
 4. Peter F
 5. Adam G
 6. Andrew L
 7. Chris M
 8. Graham P
 9. Tim W
 10. Antony Y
Ground Level Despatcher
TBA
-

Booking an Event at Colney Heath?

Tyttenhanger site is open to all members at all times.

However, on certain pre-arranged days members access is subject to some restrictions. This does not prohibit members running/sailing but should note booking requirements and priorities are as follows; -

Public running days 2pm – 5pm

Set by council. Managed by Senior Steward. Notified in news sheet

Priority given to public passenger hauling

On site parking for members and disabled badge holders only

Event Days

Proposed by members, approved by council. Managed by sponsoring member. Notified in news sheet

Priority given to event passenger hauling.

On site parking for visitors at sponsor's discretion

Private parties

Proposed by members, approved by council. Managed by sponsoring member. Notified in news sheet

Priority given to party passenger hauling.

On site parking for visitors at sponsor's discretion

PLEASE NOTE:- SIGNS ARE NOW AVAILABLE TO PLACE AT THE GATE INDICATIONG IT IS A PRIVATE PARTY AND NOT A PUBLIC RUNNING DAY

Members days

Ad hoc events do not require council approval. No notice in news sheet

No priorities apply

All public, event, parties or members days to be in accordance with the Rules and Regulations for the Tyttenhanger Site. (copies have been provided to all members)

Club Dates for your 2026 Diary

<u>Every Wednesday</u> G1 group meet at Colney Heath	
<u>Every Thursday</u> Working groups, and general conversation at Colney Heath	
<u>Every Saturday</u> Ground Level Rly at Colney Heath	
<u>Every Wednesday evening</u> O, OO and HO Gauges - Groups meet at HQ	
May 2026	
Sunday 3 rd May	Family & Friends members day at Tyttenhanger. 2 – 5pm
Wednesday 6 th May	G1MRA Surrey Group. Sponsor G H
Friday 8 th May	AGM 8pm HQ
Saturday 9 th May	Rob B private party at Tyttenhanger 1 – 4pm. Sponsor L B
Sunday 10 th May	Vintage yacht group. Sponsor P S
Saturday 16 th May	Maidstone MES. Sponsor N G
Sunday 17 th May	Public Running Day. 2 – 5pm
June 2026	
Friday 5 th June	Evening meet/run at Tyttenhanger 6pm
Sunday 7 th June	Public Running Day. 2 – 5pm
Wednesday 10 th June	G1MRA SE Group. Sponsor G H
Sunday 14 th June	Barnet Beaver groups bi annual visit 2-5pm. Sponsor L B
Saturday 20 th June	Midsummer evening run at Tyttenhanger. 6pm
Sunday 21 st June	Public Running Day. 2 – 5pm
Advance notice of events in 2026	
Friday 3 rd July	Evening meet/run at Tyttenhanger. 6pm
Saturday 11 th July	Geoff S private party. Sponsor G S
Saturday 1 st August	Breen visit
Friday 7 th August	Evening meet/run at Tyttenhanger 6pm
Friday 4 th September	Evening meet/run at Tyttenhanger 6pm
Sunday 13 th September	Vintage model yacht group, all day. Sponsor P.S – Also: Mike C celebration of 60 years NLSME membership. Sponsor L B

**NORTH LONDON SOCIETY OF MODEL ENGINEERS
Officers, Council Members & Section Leaders**

Contact details removed for this web edition

The views expressed in this News Sheet are not necessarily those of the
Chairman or Council of the NLSME.
The telephone number of the Tyttenhanger site is